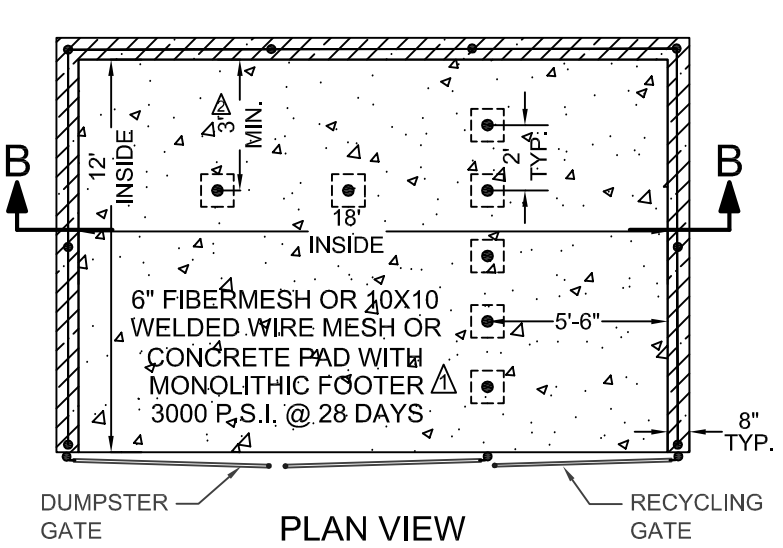
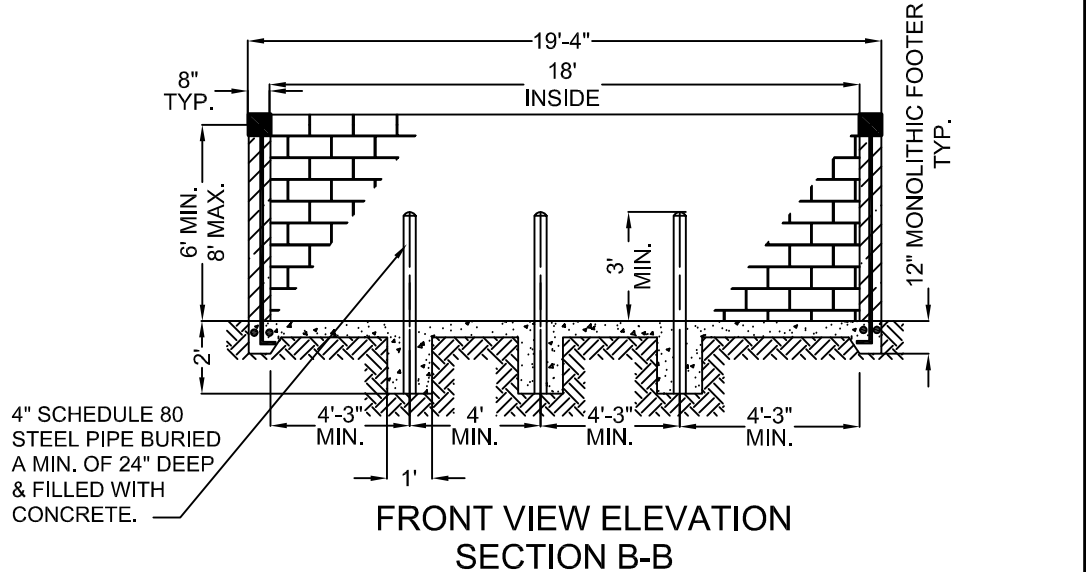


DOUBLE DUMPSTER ENCLOSURE WITH RECYCLING AREA



SINGLE DUMPSTER ENCLOSURE WITH RECYCLING AREA



- NOTES:
1. GATES WITH MIN. CLEAR OPENING OF 12' (SINGLE) OR 19' (DOUBLE) REQUIRED.
 2. GATES SHALL BE CONSTRUCTED WITH AN OPAQUE MATERIAL FOR SCREENING PURPOSES. TYPE OF MATERIAL IS AT THE OWNER'S DISCRETION.
 3. A CERTIFIED HOLD HARMLESS AGREEMENT MUST BE PROVIDED PRIOR TO CONSTRUCTION OF THE ENCLOSURE AND OR GATE.
 4. LOCATION AND ORIENTATION OF THE DUMPSTER PAD MUST BE APPROVED BY THE REFUSE DEPARTMENT PRIOR TO THE ISSUANCE OF A CONSTRUCTION PERMIT.

WINTER HAVEN <i>The Chain of Lakes City</i>		STANDARD DETAIL		
CITY STANDARD DUMPSTER PAD MINIMUM REQUIREMENTS FOR SINGLE & DOUBLE ENCLOSURES WITH RECYCLING AREA				
REVISED	DATE	SCALE	SHEET NO.	INDEX NO.
RD	9/23/09	NTS	1 OF 1	DP 102
JAC	5/19/2010			