



Final Situation Report Tropical Depression Ernesto

August 30, 2006 at 16:00 Hours

Emergency Operations - Level: 3

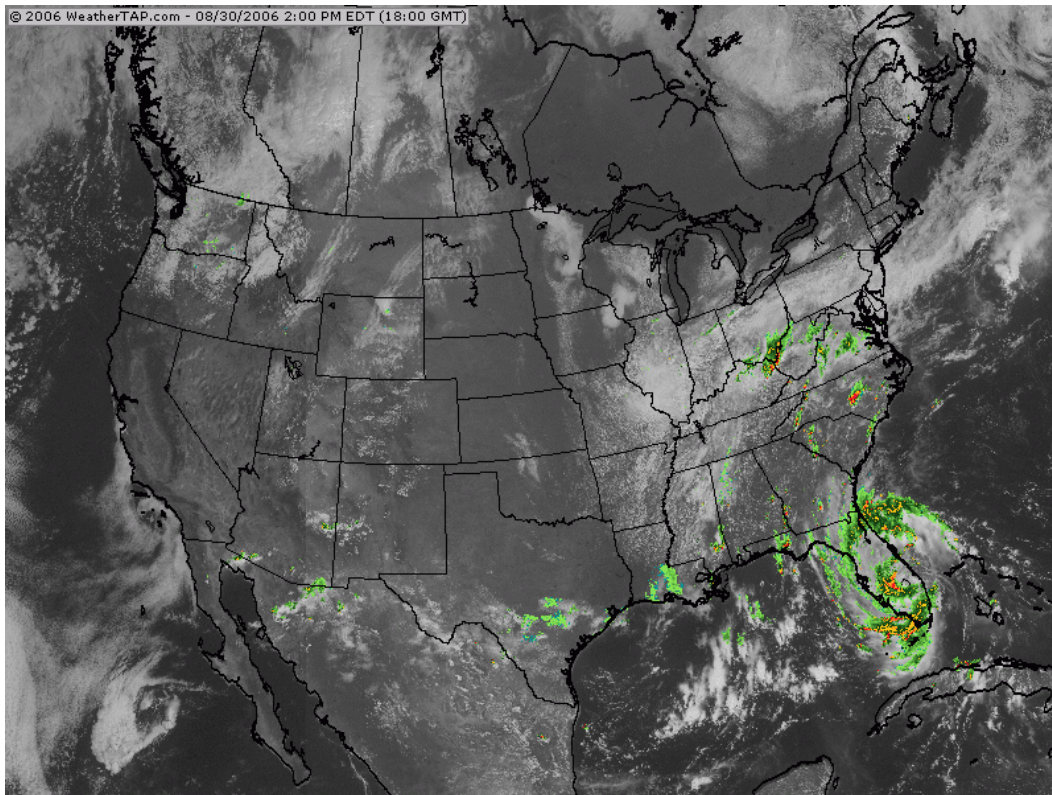
Current Situation:

At 2:00 p.m. EDT, the center of tropical depression Ernesto was estimated over the western portion of Lake Okeechobee. This is about 60 miles south-southwest of Vero Beach, Florida.

The depression is moving toward the north near 10 mph. This general motion is expected to continue today with a gradual turn to the north-northeast along the Florida peninsula. On this track the center should move over the Atlantic waters late tonight.

Maximum sustained winds are near 35 mph with higher gusts near the center and rainbands entering the state from both coasts. No change in strength is forecast while Ernesto is over land, but some intensification could occur on Thursday as the system moves over the Atlantic. Polk County will continue to experience light to moderate rain fall through the remainder of the day and night. Moderate showers and thunderstorm may continue Thursday.

SATTELITE/RADAR IMAGE OF SOUTHEAST U.S.:



City Actions:

The City's Emergency Management Division and Support Groups will cease EOC Level 3 operation at 16:00 hours today. All City Departments are on normal work hours. This is the final SITREP for Tropical Depression Ernesto. An event overview and debriefing of Emergency Operations will be scheduled within two weeks.

County & State Actions:

Polk County's EOC has reduced operations to EOC staff only. State EOC is at Level 2. Polk County Schools will open on Thursday. All other Polk County Offices including the courts will operate as normal.