

Back To School Edition

Crime Prevention August 2019

School Safety - It's Everyone's Responsibility

Monday, August 12 is the official first day back to school for Polk County Public Schools. Our landscape is getting ready to be changed with school buses, school zones, walkers and bike riders.

- Walkers should know their route before school starts (*take a "test walk" with your child*)
- Bike riders should always wear helmets and should also know their route before school starts
- Bus riders should stay in bus stop area and never play while waiting for the bus
- Make sure your child knows the dangers of talking to strangers - be alert for anyone hanging around a bus stop or following your student on their route to and from school

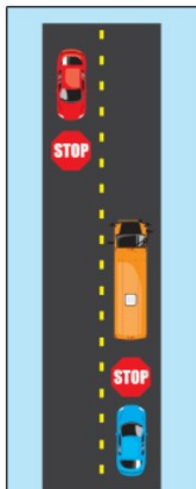
← PARENTS



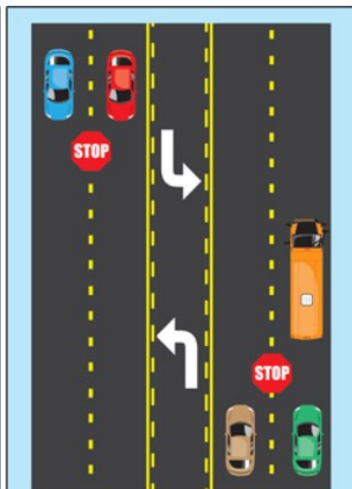
MOTORISTS →

- Be alert for school zones and watch for children walking and riding bikes
- Watch for school buses. Flashing red lights indicate the bus is stopping to load or unload children. State law requires motorists to stop and NOT attempt to pass while lights are flashing
- When backing out of a driveway or garage, be alert for children darting past a driveway
- Be the extra set of eyes looking out for anyone suspicious hanging around bus stops or any suspicious activity. We all can do our part to keep our children safe this school year.

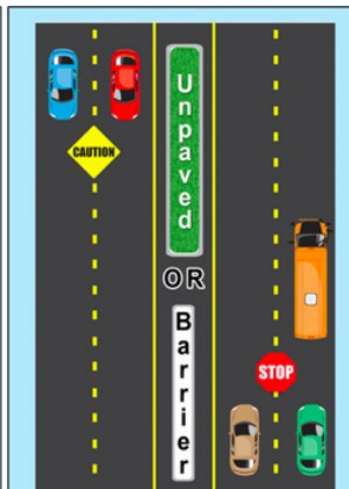
WHAT TO DO WHEN APPROACHING A STOPPED SCHOOL BUS



TWO-LANE:
Vehicles traveling in both directions **MUST** stop



MULTI-LANE Paved Across:
Vehicles traveling in both directions **MUST** stop



DIVIDED HIGHWAY
Unpaved space (Min 5ft) OR any raised median/physical barrier.
Vehicles behind bus **MUST** stop.
Vehicles traveling in the opposite direction proceed with caution.



WINTER HAVEN
POLICE

Passing a stopped school bus carries a fine of \$265 and a penalty of four points on your driver's license.

FOLLOW US ON FACEBOOK